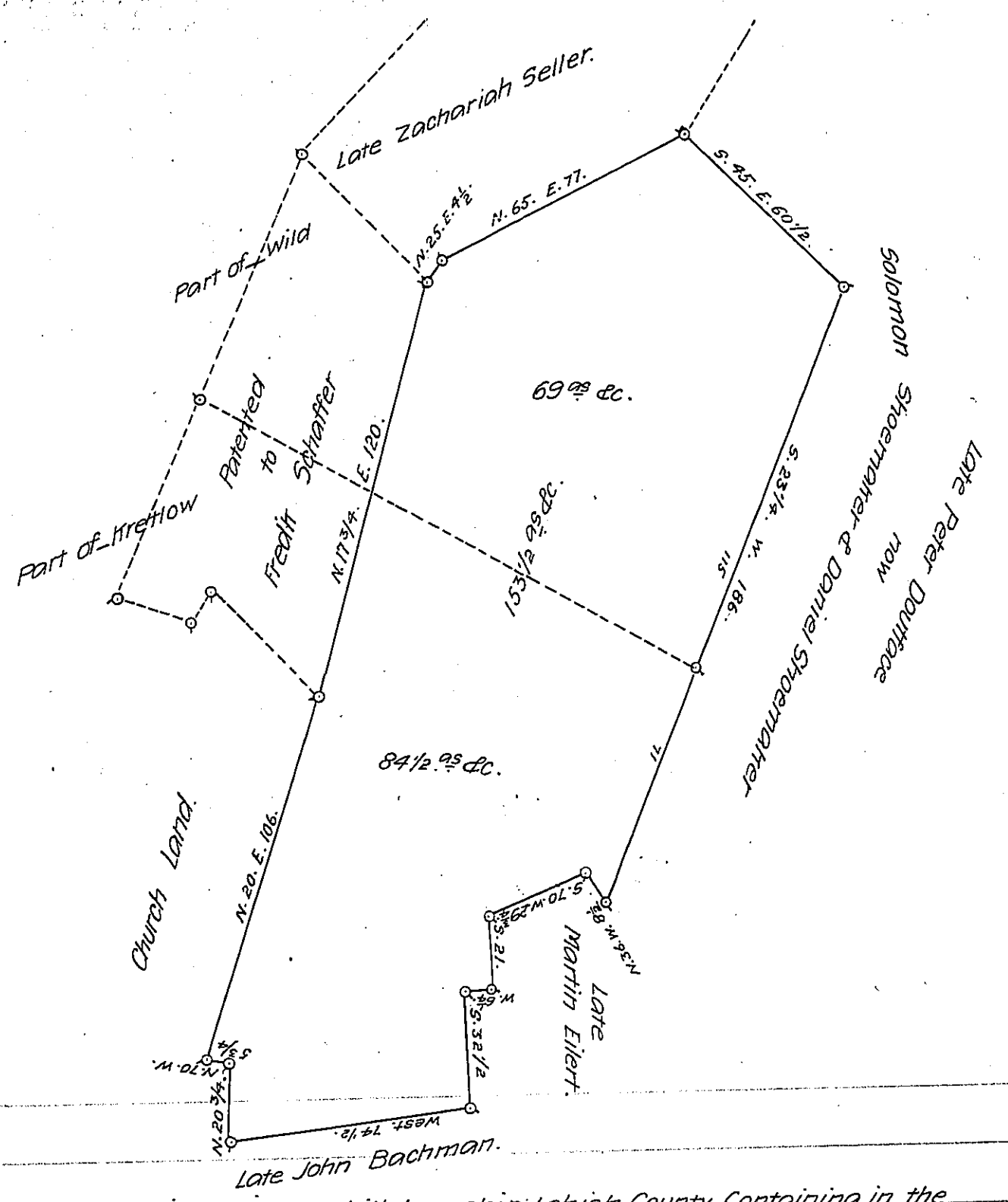


FORM NO 1.



Draft of a tract of land situate in Lowhill township, Lehigh County, Containing in the whole 153 1/2 ac. and allowance, surveyed for Benjamin Shoemaker, Joshua Werly and Solomon Shoemaker the 24th day of April A.D. 1873. being a part of two larger tracts 69 ac. & allowance part of 89 ac. 140 ac. & allowance surveyed on Wt. 19 Dec. 1749 to Ulrich Wilt. and 84 1/2 ac. & allowance part of 102 ac. 136 ac. & allowance Surveyed by Application No. 1390. dated April 10. 1766. to Henry Hretlow. to be embraced in one Patent.

Geo. Blank. C.S.

To R. B. Beath. Esq.
 Surveyor General.

IN TESTIMONY that the above is a copy of the original remaining on file in the Department of Internal Affairs of Pennsylvania, made conformably to an Act of Assembly approved the 16th day of February, 1833, I have hereunto set my Hand and caused the Seal of said Department to be affixed at Harrisburg, this twelfth day of July 1907.

Henry Howell
 Secretary of Internal Affairs.